

# Col. 06/06 - Menorca suspendido

## Acabado laminado



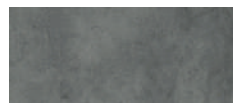
TOGO (Ref. 25)



GUINEA (Ref. 28)

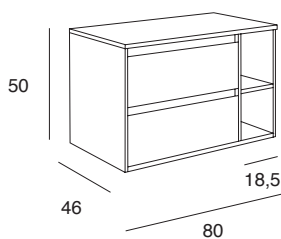


ALASKA (Ref. 26)



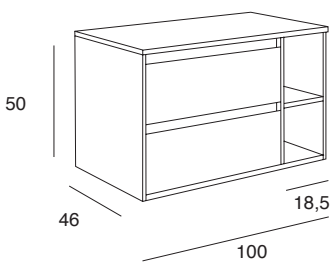
CEMENTO (Ref. 30)

## 3 modelos



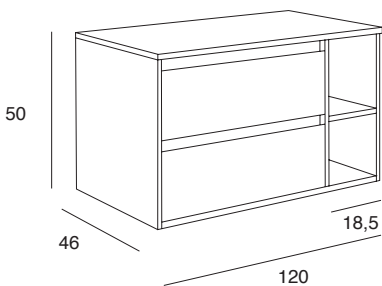
### **Menorca 80 suspendido (2 cajones)**

Laminado 02M080MELM00



### **Menorca 100 suspendido (2 cajones)**

Laminado 02M100MELM00



### **Menorca 120 suspendido (2 cajones)**

Laminado 02M120MELM00